



**PRECIOS PROMEDIOS AL
CONSUMIDOR, NO REGULADOS
DE GASOLINAS, DIESEL Y KEROSENE EN
LA CIUDAD DE MANAGUA**



**DIRECCIÓN
GENERAL DE HIDROCARBUROS-INE**

Enero- Diciembre 2012

**INSTITUTO NICARAGÜENSE DE ENERGÍA
DIRECCIÓN GENERAL DE HIDROCARBUROS**

**PRECIOS PROMEDIOS AL CONSUMIDOR EN LA CIUDAD DE MANAGUA, 2012
GASOLINA SÚPER Y GASOLINA REGULAR**

(Córdobas por Litro)

CUADRO Nº 41

FECHA	PROMEDIO GASOLINAS	GASOLINA SÚPER						GASOLINA REGULAR						T/C. PROM. C\$/US\$
		PROMEDIO	PUMA (ESSO)	UNOPETROL	PETROLEOS VCCOLP	PETRONIC	INDEPEN DIENTES	PROMEDIO	PUMA (ESSO)	UNOPET ROL	PETROLEO VCCOLP	PETRONIC	INDEPEN DIENTES	
ENERO	28,66	29,49	29,47	29,46	29,56	29,58	29,33	27,74	27,75	27,75	27,73	28,32	28,29	23,0257
05-ene-12	27,96	28,71	28,71	28,71	28,79	28,73	28,29	27,15	27,11	27,18	27,16	27,12	27,11	22,9889
09-ene-12	28,43	29,27	29,26	29,24	29,32	29,34	29,19	27,52	27,50	27,51	27,53	27,57	27,50	23,0104
16-ene-12	28,68	29,54	29,51	29,51	29,60	29,66	29,44	27,73	27,75	27,75	27,71	27,68	27,75	23,0319
23-ene-12	29,02	29,88	29,84	29,84	29,96	30,00	29,77	28,06	28,08	28,08	28,02	27,99	28,08	23,0534
30-ene-12	29,21	30,06	30,02	30,01	30,13	30,18	29,97	28,29	28,29	28,29	28,25	28,32	28,29	23,0749
FEBRERO	30,04	30,68	30,68	30,68	30,54	30,68	30,50	29,33	29,34	29,33	29,34	29,33	29,25	23,1180
06-feb-12	29,56	30,30	30,27	30,27	30,41	30,37	30,07	28,74	28,73	28,73	28,73	28,79	28,73	23,0964
13-feb-12	29,82	30,49	30,49	30,49	30,54	30,43	30,28	29,08	29,09	29,09	29,08	29,02	29,09	23,1180
20-feb-12	30,11	30,68	30,68	30,68	30,72	30,69	30,45	29,47	29,48	29,48	29,48	29,49	29,09	23,1396
27-feb-12	30,68	31,26	31,26	31,26	31,30	31,25	30,84	30,04	30,04	30,04	30,04	30,02	30,07	23,1612
MARZO	31,36	31,87	31,88	31,88	31,80	31,86	31,75	30,80	30,80	30,80	30,80	30,77	30,81	23,2106
05-mar-12	31,15	31,76	31,78	31,78	31,79	31,73	31,43	30,47	30,47	30,47	30,50	30,40	30,50	23,1828
12-mar-12	31,17	31,77	31,78	31,78	31,78	31,76	31,70	30,51	30,50	30,54	30,49	30,47	30,52	23,2044
19-mar-12	31,33	31,71	31,70	31,71	31,70	31,72	31,66	30,91	30,91	30,91	30,91	30,90	30,91	23,2261
26-mar-12	31,79	32,23	32,26	32,24	32,23	32,22	31,94	31,30	31,31	31,29	31,31	31,30	31,31	23,2478
ABRIL	32,96	33,90	33,91	33,93	33,90	33,89	33,68	31,93	31,91	31,94	31,93	31,92	31,91	23,3052
02-abr-12	-	-	-	-	-	-	-	-	-	-	-	-	-	23,2695
09-abr-12	33,28	34,16	34,18	34,18	34,15	34,16	33,95	32,31	32,32	32,32	32,30	32,29	32,31	23,2912
16-abr-12	32,85	33,81	33,83	33,86	33,87	33,67	33,48	31,79	31,79	31,80	31,84	31,69	31,78	23,3130
23-abr-12	32,76	33,73	33,71	33,74	33,70	33,84	33,61	31,68	31,64	31,70	31,64	31,79	31,63	23,3347
MAYO	31,23	32,10	32,09	32,12	32,09	32,11	31,99	30,26	30,28	30,33	30,27	29,96	30,87	23,4002
02-may-12	31,83	32,60	32,63	32,59	32,61	32,63	32,51	30,97	30,98	31,01	31,02	30,43	33,98	23,3565
07-may-12	31,64	32,36	32,29	32,37	32,36	32,45	32,35	30,85	30,87	30,97	30,85	30,43	30,90	23,3783
14-may-12	30,98	31,75	31,70	31,81	31,72	31,77	31,59	30,13	30,12	30,22	30,13	29,89	30,12	23,4001
21-may-12	31,03	31,95	32,00	31,97	31,92	31,89	31,73	30,02	30,08	30,04	29,98	29,88	29,99	23,4220
28-may-12	30,66	31,84	31,84	31,87	31,85	31,81	31,75	29,35	29,35	29,39	29,38	29,18	29,34	23,4439
JUNIO	30,06	31,17	31,17	31,17	31,54	31,15	31,07	28,83	28,85	28,86	28,84	28,70	28,85	23,4955
04-jun-12	30,82	32,02	32,03	32,02	32,03	32,00	31,78	29,49	29,51	29,52	29,49	29,34	29,52	23,4657
11-jun-12	30,11	31,35	31,35	31,36	31,37	31,26	31,56	28,74	28,76	28,78	28,75	28,55	28,76	23,4876
18-jun-12	29,65	30,54	30,52	30,51	30,58	30,63	30,31	28,67	28,69	28,69	28,68	28,59	28,68	23,5096
25-jun-12	29,65	30,76	30,79	30,76	30,79	30,74	30,45	28,43	28,44	28,45	28,45	28,32	28,44	23,5315
JULIO	29,53	30,46	30,47	30,45	30,49	30,48	30,47	28,50	28,49	28,53	28,51	28,39	28,51	23,5912
02-jul-12	28,34	29,00	29,01	29,01	29,01	29,00	29,01	27,61	27,61	27,66	27,59	27,50	27,61	23,5535
09-jul-12	29,03	29,86	29,89	29,85	29,90	29,90	29,90	28,11	28,12	28,15	28,12	28,02	28,12	23,5755
16-jul-12	29,90	30,91	30,93	30,90	30,96	31,00	30,93	28,78	28,69	28,79	28,81	28,70	28,79	23,5975
23-jul-12	29,93	30,92	30,91	30,90	30,94	30,90	30,93	28,84	28,85	28,86	28,86	28,72	28,85	23,6195
30-jul-12	29,53	30,46	30,47	30,45	30,49	30,48	30,47	28,50	28,49	28,53	28,51	28,39	28,51	23,6416
AGOSTO	31,39	32,20	32,22	32,19	31,98	32,23	31,90	30,49	30,52	30,50	30,50	30,35	30,51	23,6889
06-ago-12	30,67	31,74	31,77	31,74	31,77	31,78	31,31	29,49	29,52	29,52	29,51	29,35	29,52	23,6636
13-ago-12	31,21	31,83	31,84	31,81	31,84	31,89	31,61	30,52	30,56	30,52	30,55	30,41	30,56	23,6857
20-ago-12	31,71	32,42	32,44	32,42	32,44	32,45	32,22	30,91	30,93	30,94	30,92	30,78	30,93	23,7078
27-ago-12	31,95	32,79	32,83	32,79	32,82	32,79	32,48	31,02	31,05	31,04	31,05	30,88	31,04	23,7300
SEPTIEMBRE	32,67	33,56	33,59	33,56	33,49	33,50	33,43	31,68	31,71	31,71	31,69	31,49	31,70	23,7854
03-sep-12	32,75	33,41	33,43	33,40	33,43	33,40	33,21	32,02	32,05	32,05	32,04	31,87	32,05	23,7521
10-sep-12	32,73	33,75	33,78	33,75	33,78	33,73	33,57	31,60	31,63	31,63	31,61	31,45	31,63	23,7743
17-sep-12	32,98	33,91	33,94	33,91	33,94	33,87	33,72	31,95	31,99	31,99	31,94	31,77	31,99	23,7965
24-sep-12	32,20	33,17	33,21	33,18	33,21	33,01	33,21	31,13	31,16	31,17	31,16	30,86	31,14	23,8187
OCTUBRE	31,33	32,10	32,11	32,10	32,12	32,09	32,00	30,47	30,50	30,53	30,48	30,23	30,50	23,8823
01-oct-12	31,75	32,82	32,80	32,81	32,81	32,88	32,96	30,56	30,57	30,62	30,56	30,35	30,58	23,8410
08-oct-12	32,10	33,03	33,07	33,04	33,05	32,93	32,85	31,08	31,14	31,14	31,11	30,77	31,14	23,8632
15-oct-12	32,15	32,66	32,68	32,65	32,73	32,60	32,44	31,58	31,63	31,61	31,62	31,36	31,61	23,8855
22-oct-12	31,18	31,81	31,80	31,80	31,80	31,85	31,86	30,48	30,50	30,54	30,48	30,25	30,50	23,9078
29-oct-12	29,46	30,18	30,18	30,21	30,18	30,18	29,91	28,66	28,66	28,73	28,65	28,44	30,50	23,9301
NOVIEMBRE	29,04	29,50	29,56	29,53	29,40	29,33	29,34	28,52	28,56	28,57	28,53	28,30	28,57	23,9796
05-nov-12	28,80	29,29	29,37	29,35	29,33	28,98	29,10	28,25	28,27	28,29	28,25	28,08	28,27	23,9524
12-nov-12	29,10	29,65	29,73	29,70	29,71	29,32	29,51	28,50	28,55	28,54	28,52	28,23	28,55	23,9748
19-nov-12	29,01	29,43	29,45	29,43	29,47	29,39	29,23	28,55	28,60	28,60	28,57	28,28	28,60	23,9972
26-nov-12	29,24	29,64	29,67	29,64	29,64	29,65	29,51	28,80	28,84	28,84	28,78	28,59	28,84	24,0196
DICIEMBRE	28,99	29,73	29,75	29,72	29,75	29,76	29,56	28,17	28,19	28,20	28,18	28,01	28,30	24,0773
03-dic-12	29,32	30,00	30,03	29,98	30,02	29,97	29,81	28,57	28,60	28,61	28,58	28,38	28,60	24,0420
10-dic-12	29,24	29,92	29,94	29,90	29,91	30,00	29,71	28,50	28,52	28,52	28,51	28,39	28,52	24,0645
17-dic-12	28,41	29,20	29,19	29,19	29,20	29,28	29,06	27,55	27,55	27,59	27,54	27,45	27,55	24,0869
27-dic-12	28,99	29,83	29,85	29,82	29,82	29,80	29,66	28,06	28,09	28,09	28,07	27,83	28,52	24,1094
PROMEDIO														

INSTITUTO NICARAGÜENSE DE ENERGÍA
DIRECCIÓN GENERAL DE HIDROCARBUROS
PRECIOS PROMEDIOS AL CONSUMIDOR EN LA CIUDAD DE MANAGUA, 2012
DIESEL CON ADITIVO Y SIN ADITIVO

(Córdobas por Litro)

CUADRO N° 42

FECHA	PROMEDIO DIESEL	DIESEL CON ADITIVO						DIESEL SIN ADITIVO			T/C. PROM. C\$/US\$
		PROMEDIO	PUMA ENERGY (ESSO)	UNOPETROL	UNO PETROLEOS Y CCLR	PETRONIC	INDEPENDIENTES	PROMEDIO	UNOPETROL	INDEPENDIENTES	
ENERO	27,00	27,03	26,94	27,14	27,04	27,02	26,85	26,92	26,92	-	23,0257
05-ene-12	26,49	26,52	26,43	26,63	26,52	26,44	26,41	26,42	26,42	-	22,9889
09-ene-12	27,01	27,05	26,96	27,15	27,04	27,04	26,94	26,92	26,92	-	23,0104
16-ene-12	27,39	27,42	27,33	27,55	27,41	27,47	26,98	27,29	27,29	-	23,0319
23-ene-12	27,10	27,13	27,02	27,22	27,19	27,10	27,01	27,03	27,03	-	23,0534
30-ene-12	27,02	27,05	26,94	27,16	27,04	27,05	26,92	26,94	26,94	-	23,0749
FEBRERO	27,80	27,82	27,73	27,94	27,84	27,73	27,60	27,73	27,73	-	23,1180
06-feb-12	27,18	27,21	27,12	27,32	27,22	27,17	27,04	27,11	27,11	-	23,0964
13-feb-12	27,69	27,71	27,63	27,84	27,76	27,57	27,43	27,63	27,63	-	23,1180
20-feb-12	27,90	27,93	27,84	28,06	27,93	27,84	27,76	27,83	27,83	-	23,1396
27-feb-12	28,41	28,42	28,35	28,56	28,42	28,32	28,16	28,36	28,36	-	23,1612
MARZO	28,62	28,64	28,57	28,75	28,58	28,54	28,46	28,56	28,56	-	23,2106
05-mar-12	28,60	28,62	28,56	28,77	28,61	28,45	28,47	28,56	28,56	-	23,1828
12-mar-12	28,39	28,42	28,36	28,54	28,35	28,35	28,38	28,31	28,31	-	23,2044
19-mar-12	28,66	28,67	28,61	28,80	28,61	28,59	28,52	28,61	28,61	-	23,2261
26-mar-12	28,81	28,83	28,77	28,97	28,77	28,76	28,63	28,76	28,76	-	23,2478
ABRIL	28,43	28,45	28,37	28,58	28,39	28,35	28,41	28,39	28,39	-	23,3052
02-abr-12	-	-	-	-	-	-	-	-	-	-	23,2695
09-abr-12	28,62	28,64	28,55	28,77	28,58	28,56	28,62	28,57	28,57	-	23,2912
16-abr-12	28,29	28,30	28,24	28,45	28,26	28,09	28,33	28,26	28,26	-	23,3130
23-abr-12	28,38	28,40	28,32	28,54	28,33	28,39	28,27	28,33	28,33	-	23,3347
MAYO	27,60	27,61	27,56	27,76	27,54	27,48	27,48	27,57	27,57	-	23,4002
02-may-12	28,30	28,32	28,26	28,46	28,26	28,21	28,15	28,26	28,26	-	23,3565
07-may-12	28,49	28,51	28,49	28,64	28,43	28,39	28,28	28,45	28,45	-	23,3783
14-may-12	27,51	27,52	27,43	27,70	27,46	27,39	27,40	27,49	27,49	-	23,4001
21-may-12	27,13	27,14	27,10	27,29	27,01	26,98	27,13	27,09	27,09	-	23,4220
28-may-12	26,57	26,58	26,51	26,72	26,53	26,45	26,42	26,54	26,54	-	23,4439
JUNIO	25,58	25,60	25,54	25,70	25,54	25,48	25,58	25,55	25,55	-	23,4955
04-jun-12	26,31	26,32	26,28	26,41	26,29	26,27	26,26	26,27	26,27	-	23,4657
11-jun-12	25,42	25,42	25,37	25,55	25,37	25,26	25,55	25,39	25,39	-	23,4876
18-jun-12	25,33	25,35	25,29	25,47	25,29	25,27	25,25	25,29	25,29	-	23,5096
25-jun-12	25,26	25,28	25,22	25,41	25,22	25,20	25,21	25,22	25,22	-	23,5315
JULIO	25,74	25,76	25,70	25,87	25,71	25,71	25,61	25,70	25,70	-	23,5912
02-jul-12	24,81	24,82	24,75	24,95	24,75	24,76	24,75	24,78	24,78	-	23,5535
09-jul-12	25,32	25,33	25,28	25,46	25,28	25,28	25,10	25,28	25,28	-	23,5755
16-jul-12	25,78	25,79	25,73	25,91	25,76	25,78	25,58	25,73	25,73	-	23,5975
23-jul-12	26,27	26,28	26,23	26,38	26,25	26,22	26,22	26,23	26,23	-	23,6195
30-jul-12	25,74	25,76	25,70	25,87	25,71	25,71	25,61	25,70	25,70	-	23,6416
AGOSTO	27,32	27,34	27,29	27,46	27,28	27,28	27,20	27,27	27,27	-	23,6889
06-ago-12	26,48	26,50	26,44	26,62	26,44	26,46	26,36	26,44	26,44	-	23,6636
13-ago-12	27,01	27,04	26,99	27,14	26,99	26,99	26,90	26,94	26,94	-	23,6857
20-ago-12	27,67	27,68	27,62	27,81	27,62	27,61	27,61	27,63	27,63	-	23,7078
27-ago-12	28,12	28,13	28,09	28,26	28,08	28,06	27,92	28,08	28,08	-	23,7300
SEPTIEMBRE	28,59	28,60	28,55	28,72	28,54	28,50	28,58	28,55	28,55	-	23,7854
03-sep-12	28,31	28,32	28,26	28,44	28,26	28,22	28,37	28,28	28,28	-	23,7521
10-sep-12	28,58	28,59	28,54	28,72	28,54	28,50	28,54	28,54	28,54	-	23,7743
17-sep-12	28,77	28,79	28,75	28,90	28,73	28,67	28,74	28,73	28,73	-	23,7965
24-sep-12	28,68	28,70	28,64	28,83	28,63	28,59	28,67	28,64	28,64	-	23,8187
OCTUBRE	28,68	28,69	28,63	28,82	28,63	28,60	28,63	28,64	28,64	-	23,8823
01-oct-12	28,37	28,39	28,32	28,51	28,32	28,29	28,46	28,33	28,33	-	23,8410
08-oct-12	28,68	28,69	28,64	28,82	28,63	28,56	28,65	28,64	28,64	-	23,8632
15-oct-12	28,99	29,01	28,95	29,12	28,96	28,92	28,90	28,94	28,94	-	23,8855
22-oct-12	29,13	29,14	29,08	29,26	29,10	29,09	28,99	29,08	29,08	-	23,9078
29-oct-12	28,22	28,23	28,16	28,38	28,16	28,15	28,15	28,20	28,20	-	23,9301
NOVIEMBRE	28,01	28,02	27,95	28,16	27,94	27,94	27,95	27,97	27,97	-	23,9796
05-nov-12	28,02	28,04	27,97	28,15	27,97	28,01	27,96	27,96	27,96	-	23,9524
12-nov-12	27,80	27,82	27,76	27,95	27,76	27,72	27,75	27,76	27,76	-	23,9748
19-nov-12	27,97	27,98	27,89	28,15	27,88	27,86	27,89	27,97	27,97	-	23,9972
26-nov-12	28,23	28,24	28,19	28,37	28,14	28,18	28,18	28,19	28,19	-	24,0196
DICIEMBRE	27,94	27,96	27,90	28,08	27,90	27,90	27,90	27,90	27,90	-	24,0773
03-dic-12	28,25	28,27	28,22	28,39	28,21	28,18	28,18	28,21	28,21	-	24,0420
10-dic-12	28,23	28,25	28,18	28,36	28,15	28,26	28,26	28,18	28,18	-	24,0645
17-dic-12	27,46	27,46	27,39	27,61	27,40	27,39	27,39	27,43	27,43	-	24,0869
27-dic-12	27,84	27,86	27,80	27,98	27,83	27,76	27,76	27,80	27,80	-	24,1094
PROMEDIO	27,57	27,59	27,52	27,72	27,53	27,50	27,47	27,53	27,53	-	23,5480

FUENTE: ESTACIONES DE SERVICIO DE LA CIUDAD DE MANAGUA

**INSTITUTO NICARAGÜENSE DE ENERGÍA
DIRECCIÓN GENERAL DE HIDROCARBUROS**

PRECIOS PROMEDIOS AL CONSUMIDOR EN LA CIUDAD DE MANAGUA, 2012

KEROSENE

(Córdobas por Litro)

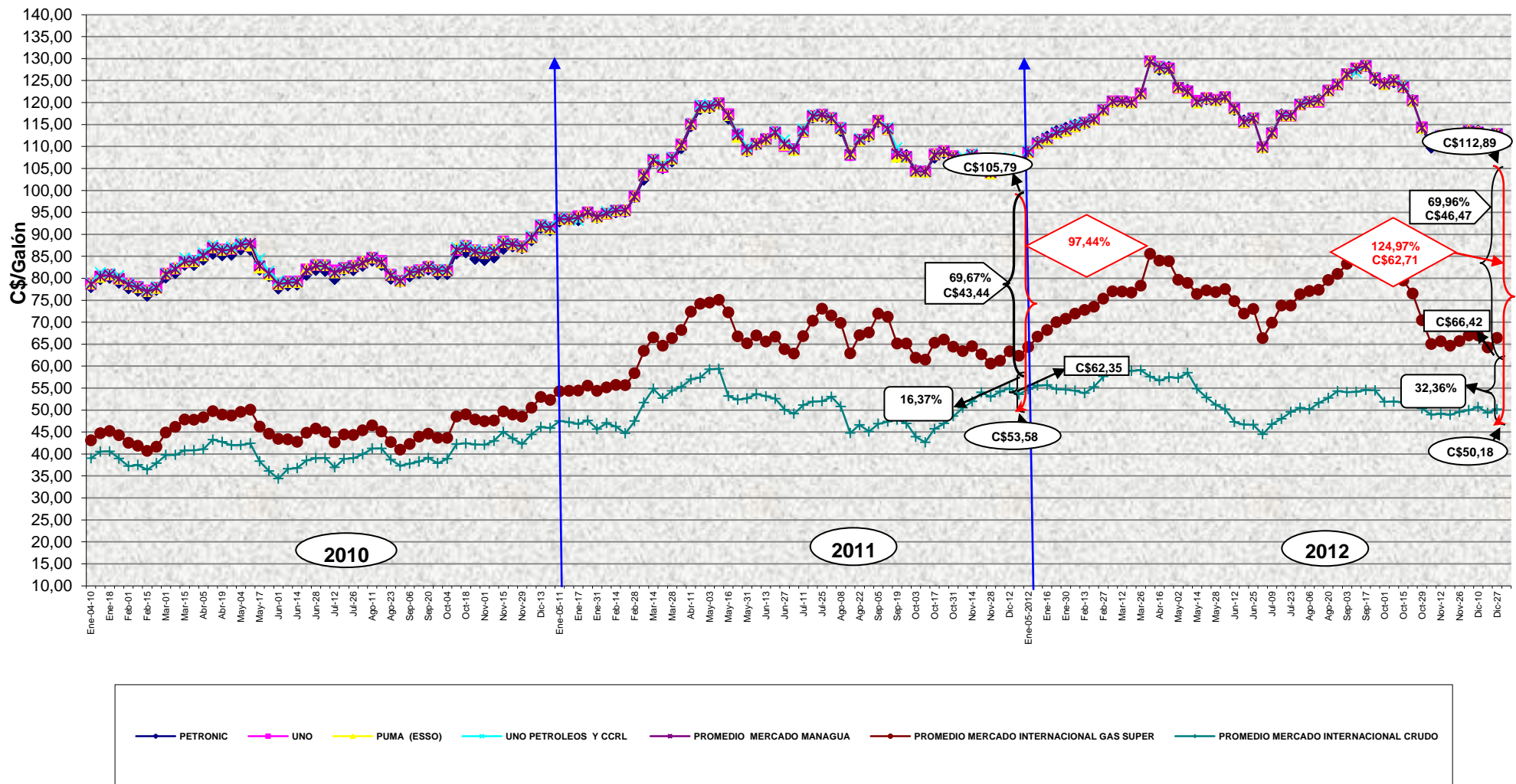
CUADRO Nº 43

FECHA	PROMEDIO	PUMA ENERGY (ESSO)	UNO	UNO PETROLEOS Y CCLR	T/C. PROM. C\$/US\$
ENERO	26,79	27,03	24,49	27,54	23,0257
05-ene-12	25,82	26,63	23,62	26,52	22,9889
09-ene-12	26,70	27,25	24,12	27,38	23,0104
16-ene-12	27,03	27,33	24,47	27,78	23,0319
23-ene-12	27,17	27,03	25,12	27,90	23,0534
30-ene-12	27,05	26,89	25,12	27,75	23,0749
FEBRERO	27,65	27,55	26,01	28,28	23,1180
06-feb-12	26,85	26,99	25,40	27,51	23,0964
13-feb-12	27,67	27,52	25,90	28,30	23,1180
20-feb-12	27,69	27,56	26,15	28,24	23,1396
27-feb-12	28,22	28,11	26,60	28,80	23,1612
MARZO	28,33	28,53	26,46	28,94	23,2106
05-mar-12	28,44	28,40	26,51	29,10	23,1828
12-mar-12	28,18	28,64	26,21	28,69	23,2044
19-mar-12	28,25	28,50	26,46	29,02	23,2261
26-mar-12	28,44	28,58	26,66	28,99	23,2478
ABRIL	28,08	28,35	26,25	28,86	23,3052
02-abr-12	-	-	-	-	23,2695
09-abr-12	28,30	28,55	26,45	29,10	23,2912
16-abr-12	27,86	28,15	26,11	28,60	23,3130
23-abr-12	28,09	28,35	26,20	28,90	23,3347
MAYO	27,41	27,28	26,02	27,88	23,4002
02-may-12	27,96	28,10	26,20	28,78	23,3565
07-may-12	27,82	28,32	26,20	28,94	23,3783
14-may-12	27,12	27,27	26,20	27,90	23,4001
21-may-12	-	-	-	-	23,4220
28-may-12	26,89	26,25	25,67	27,51	23,4439
JUNIO	25,93	25,75	23,80	27,25	23,4955
04-jun-12	26,73	25,98	24,47	27,73	23,4657
11-jun-12	25,87	25,74	23,60	28,26	23,4876
18-jun-12	24,61	25,62	23,60	23,60	23,5096
25-jun-12	25,70	25,66	23,54	23,54	23,5315
JULIO	26,26	26,39	23,93	26,99	23,5912
02-jul-12	25,76	25,29	24,22	26,43	23,5535
09-jul-12	26,03	25,92	23,32	26,97	23,5755
16-jul-12	26,48	26,53	23,77	27,36	23,5975
23-jul-12	26,74	26,96	24,17	27,53	23,6195
30-jul-12	26,27	27,27	24,18	26,64	23,6416
AGOSTO	27,07	28,06	25,48	27,28	23,6889
06-ago-12	26,64	27,29	25,91	26,66	23,6636
13-ago-12	26,90	27,84	24,78	27,29	23,6857
20-ago-12	27,21	28,41	25,41	27,52	23,7078
27-ago-12	27,54	28,71	25,81	27,73	23,7300
SEPTIEMBRE	27,84	29,04	26,21	27,99	23,7854
03-sep-12	27,78	29,02	25,99	27,97	23,7521
10-sep-12	27,86	29,14	26,20	27,99	23,7743
17-sep-12	27,89	29,09	26,40	27,99	23,7965
24-sep-12	27,82	28,89	26,25	27,99	23,8187
OCTUBRE	27,87	28,44	26,28	28,34	23,8823
01-oct-12	27,73	28,53	26,15	27,99	23,8410
08-oct-12	27,83	28,34	26,40	28,13	23,8632
15-oct-12	27,92	28,34	26,50	28,25	23,8855
22-oct-12	28,18	28,97	26,60	28,57	23,9078
29-oct-12	27,71	28,11	25,60	28,57	23,9301
NOVIEMBRE	27,63	27,86	25,39	28,44	23,9796
05-nov-12	27,58	27,78	25,41	28,57	23,9524
12-nov-12	27,50	27,65	25,20	28,57	23,9748
19-nov-12	27,55	27,76	25,33	28,21	23,9972
26-nov-12	27,87	28,24	25,63	28,50	24,0196
DICIEMBRE	27,76	27,85	25,34	28,54	24,0773
03-dic-12	27,89	28,31	25,66	28,50	24,0420
10-dic-12	27,85	28,12	25,62	28,50	24,0645
17-dic-12	27,54	27,34	24,84	28,50	24,0869
27-dic-12	27,78	27,64	25,24	28,67	24,1094
PROMEDIO	27,36	27,66	25,42	27,36	23,5480

FUENTE: ESTACIONES DE SERVICIO DE LA CIUDAD DE MANAGUA

Instituto Nicaragüense de Energía Dirección General de Hidrocarburos

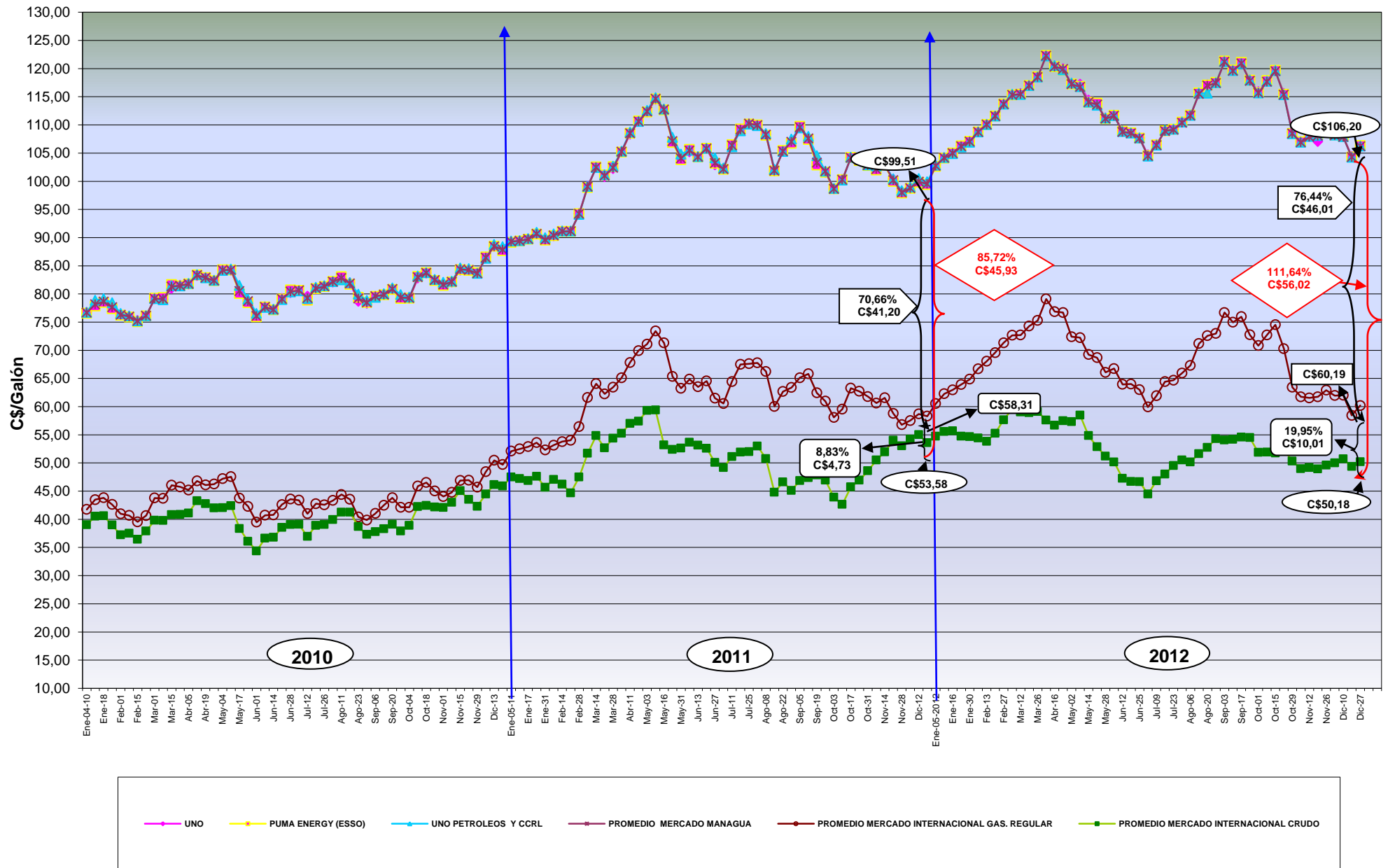
Evolución de los Precios de la Gasolina Súper, Nacional vs. Internacional, 2009-2012



LAS DIFERENCIAS ENTRE LOS PRECIOS NACIONALES E INTERNACIONALES CORRESPONDEN A FLETE Y SEGUROS, COSTOS DE INTERNACION, ALMACENAMIENTO, COMERCIALIZACION E IMPUESTOS,

Instituto Nicaragüense de Energía Dirección General de Hidrocarburos

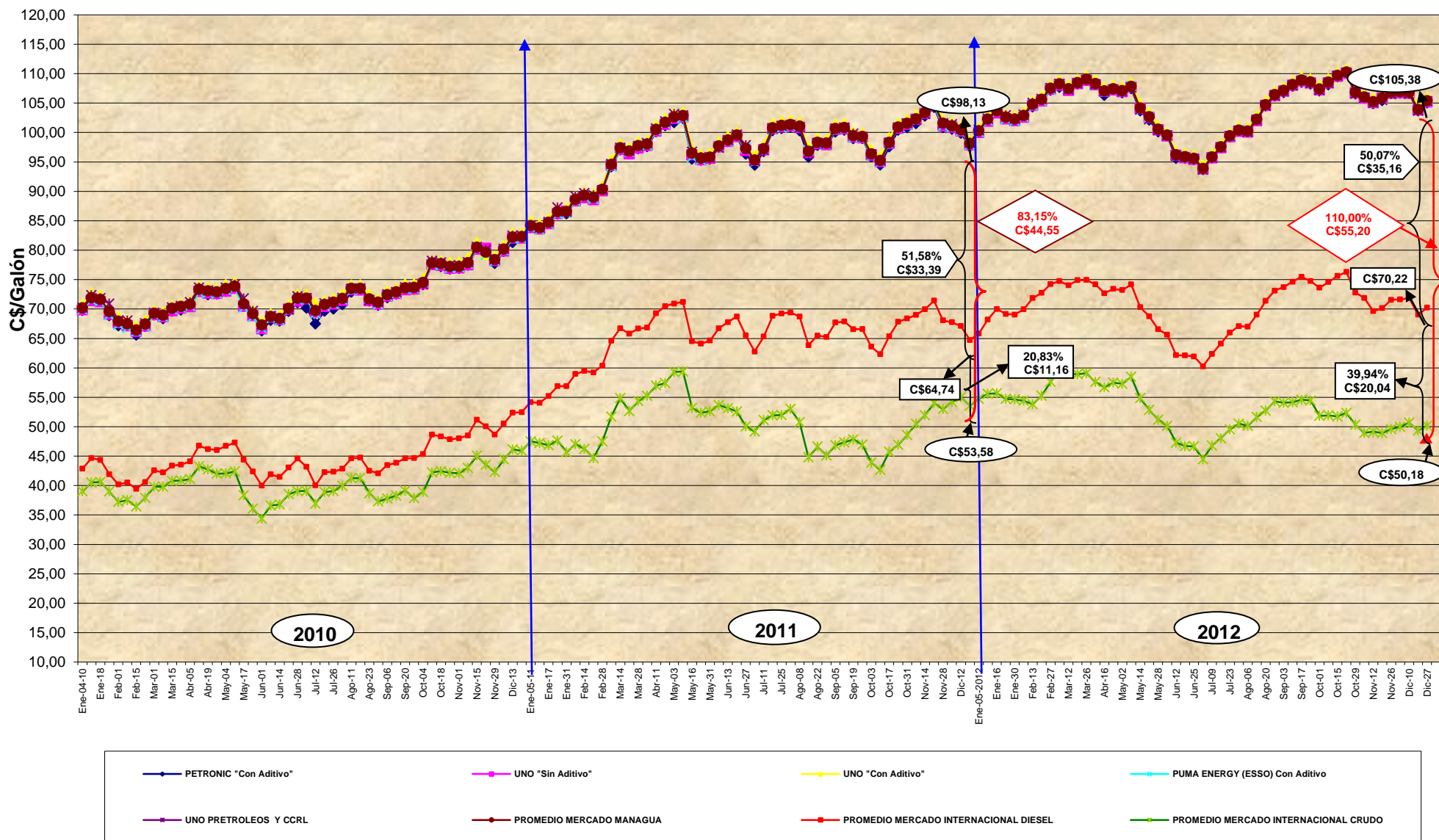
Evolución de los Precios de la Gasolina Regular, Nacional vs. Internacional, 2009-2012



LAS DIFERENCIAS ENTRE LOS PRECIOS NACIONALES E INTERNACIONALES CORRESPONDEN A FLETE Y SEGUROS,, COSTOS DE INTERNACION , ALMACENAMIENTO, COMERCIALIZACION E IMPUESTOS,

Instituto Nicaragüense de Energía Dirección General de Hidrocarburos

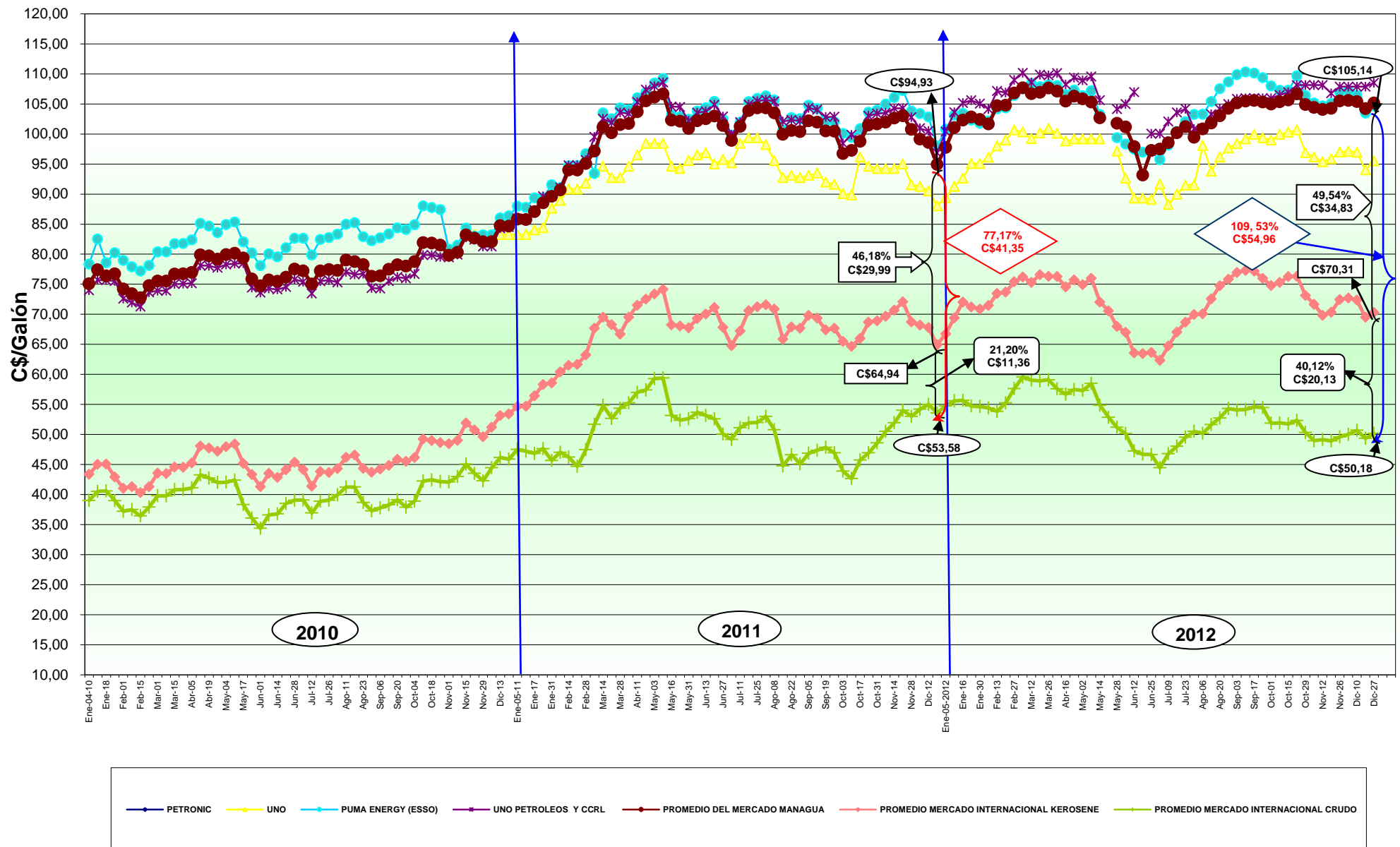
Evolución de los Precios del Diesel Nacional vs. Internacional, 2009-2012



LAS DIFERENCIAS ENTRE LOS PRECIOS NACIONALES E INTERNACIONALES CORRESPONDEN A FLETE Y SEGUROS, COSTOS DE INTERNACION, ALMACENAMIENTO, COMERCIALIZACION E IMPUESTOS

Instituto Nicaragüense de Energía Dirección General de Hidrocarburos

Evolución de los Precios del Kerosene Nacional vs. Internacional, 2009-2012



LAS DIFERENCIAS ENTRE LOS PRECIOS NACIONALES E INTERNACIONALES CORRESPONDEN A FLETE Y SEGUROS, COSTOS DE INTERNACION , ALMACENAMIENTO, COMERCIALIZACION E IMPUESTOS