



*INSTITUTO NICARAGÜENSE DE ENERGÍA
ENTE REGULADOR*

DIRECCIÓN GENERAL DE HIDROCARBUROS

**PRECIOS PROMEDIOS AL
CONSUMIDOR: GASOLINAS,
DIESEL Y KEROSENE**

EN LA CIUDAD DE MANAGUA



Enero – Diciembre, 2016

**INSTITUTO NICARAGÜENSE DE ENERGÍA
DIRECCIÓN GENERAL DE HIDROCARBUROS**

**PRECIOS PROMEDIOS AL CONSUMIDOR EN LA CIUDAD DE MANAGUA, 2016
GASOLINA SÚPER Y GASOLINA REGULAR**

(Córdobas por Litro)

FECHA	PROMEDIO GASOLINAS	GASOLINA SÚPER							GASOLINA REGULAR					T/C. PROM. C\$/US\$	
		PROMEDIO	PUMA ENERGY	UNO	UNO PETROLEOS	DNP/PETRO NIC	INDEPEN DIENTES	PROMEDIO	PUMA ENERGY	UNO	UNO PETROLEOS	DNP/PETR ONIC	INDEPENI ENTES		
ENERO	23,08	23,66	23,68	23,66	23,99	23,68	23,31	22,44	22,45	22,45	22,45	22,45	22,45	22,45	27,9879
04-ene-16	23,80	24,38	24,42	24,37	24,42	24,38	24,02	23,17	23,18	23,18	23,18	23,16	23,16	22,98	27,9506
11-ene-16	23,74	24,32	24,36	24,31	24,35	24,33	23,96	23,11	23,12	23,11	23,11	23,09	23,09	22,92	27,9767
18-ene-16	22,79	23,52	23,56	23,52	23,56	23,54	23,16	21,99	22,00	21,99	22,00	21,98	21,98	21,80	28,0028
25-ene-16	21,97	22,42	22,38	22,43	22,48	22,46	22,08	21,49	21,51	21,50	21,50	21,48	21,48	21,26	28,0290
FEBRERO	22,09	22,68	22,72	22,67	22,71	22,69	22,32	21,45	21,46	21,45	21,46	21,43	21,43	21,26	28,1001
01-feb-16	22,19	22,74	22,78	22,73	22,78	22,75	22,38	21,58	21,59	21,59	21,59	21,57	21,57	21,39	28,0551
08-feb-16	22,41	23,03	23,07	23,03	23,06	23,05	22,67	21,73	21,74	21,73	21,74	21,71	21,71	21,54	28,0813
15-feb-16	21,91	22,67	22,71	22,66	22,71	22,68	22,31	21,09	21,10	21,09	21,10	21,07	21,07	20,90	28,1076
22-feb-16	22,00	22,51	22,55	22,51	22,55	22,53	22,15	21,44	21,45	21,45	21,45	21,42	21,42	21,25	28,1338
29-feb-16	21,94	22,44	22,47	22,43	22,47	22,45	22,10	21,41	21,42	21,42	21,42	21,39	21,39	21,24	28,1601
MARZO	23,80	24,29	24,33	24,29	24,33	24,30	24,10	23,26	23,27	23,27	23,27	23,24	23,24	23,27	28,2095
07-mar-16	22,68	23,09	23,13	23,08	23,13	23,10	23,13	22,24	22,25	22,25	22,25	22,23	22,23	22,25	28,1863
14-mar-16	23,24	23,75	23,79	23,74	23,79	23,76	23,79	22,68	22,69	22,69	22,69	22,67	22,67	22,69	28,2127
21-mar-16	24,50	25,08	25,11	25,08	25,11	25,09	25,11	23,86	23,87	23,87	23,87	23,84	23,84	23,87	28,2390
28-mar-16	24,77	25,25	25,29	25,24	25,28	25,26	25,20	24,25	24,27	24,26	24,26	24,23	24,23	24,27	28,2654
ABRIL	25,10	25,61	25,65	25,59	25,64	25,62	25,65	24,54	24,56	24,55	24,55	24,54	24,54	24,56	28,3276
04-abr-16	25,07	25,62	25,66	25,61	25,66	25,64	25,66	24,46	24,47	24,47	24,47	24,45	24,45	24,47	28,2880
11-abr-16	24,31	24,80	24,84	24,79	24,84	24,81	24,84	23,77	23,79	23,77	23,77	23,79	23,79	23,79	28,3144
18-abr-16	25,42	25,92	25,96	25,92	25,96	25,94	25,96	24,88	24,89	24,89	24,89	24,88	24,88	24,89	28,3408
25-abr-16	25,59	26,08	26,12	26,06	26,12	26,09	26,12	25,06	25,08	25,07	25,07	25,04	25,04	25,08	28,3673
MAYO	26,23	26,79	26,74	26,70	26,77	26,72	26,74	25,61	25,51	25,51	25,52	25,49	25,49	25,51	28,4430
02-may-16	26,28	26,84	26,87	26,83	26,87	26,84	26,87	25,68	25,69	25,69	25,69	25,66	25,66	25,69	28,3976
09-may-16	26,47	27,09	27,12	27,08	27,12	27,10	27,12	25,80	25,81	25,81	25,81	25,78	25,78	25,81	28,4241
16-may-16	25,66	26,31	26,34	26,32	26,34	26,31	26,34	24,95	24,95	24,98	24,98	24,95	24,93	24,95	28,4506
23-may-16	26,11	26,60	26,64	26,58	26,64	26,62	26,64	25,57	25,59	25,56	25,59	25,59	25,59	25,59	28,4772
31-may-16	26,61	27,10	27,14	27,09	27,14	27,11	27,14	26,07	26,09	26,08	26,09	26,04	26,04	26,09	28,5037
JUNIO	26,49	26,93	26,97	26,92	26,96	26,94	26,57	26,01	26,03	26,02	26,02	26,00	26,00	25,83	28,5589
06-jun-16	26,81	27,28	27,32	27,27	27,32	27,30	26,72	26,28	26,29	26,29	26,29	26,27	26,27	26,12	28,5304
13-jun-16	26,70	27,10	27,13	27,09	27,13	27,11	26,73	26,27	26,28	26,27	26,28	26,25	26,25	26,08	28,5570
20-jun-16	26,21	26,64	26,67	26,63	26,67	26,66	26,27	25,75	25,76	25,75	25,76	25,73	25,73	25,56	28,5837
27-jun-16	26,25	26,70	26,74	26,69	26,74	26,71	26,34	25,76	25,77	25,77	25,77	25,75	25,75	25,57	28,6103
JULIO	25,69	26,14	26,18	26,14	26,37	26,15	26,18	25,21	25,22	25,21	25,21	25,19	25,19	25,22	28,6753
04-jul-16	26,21	26,64	26,68	26,64	26,67	26,70	26,68	25,74	25,75	25,75	25,75	25,72	25,72	25,75	28,6370
11-jul-16	25,79	26,16	26,19	26,17	26,19	26,20	26,19	25,39	25,39	25,40	25,39	25,38	25,39	25,39	28,6638
18-jul-16	25,24	25,64	25,67	25,65	25,67	25,60	25,67	24,80	24,80	24,82	24,80	24,77	24,80	24,80	28,6905
25-jul-16	25,52	26,10	26,16	26,10	26,16	26,10	26,16	24,89	24,92	24,88	24,88	24,92	24,89	24,92	28,7173
AGOSTO	25,49	25,82	25,85	25,80	25,85	25,83	25,46	25,13	25,14	25,13	25,14	25,11	25,11	24,94	28,7940
02-ago-16	25,07	25,38	25,42	25,37	25,42	25,39	25,03	24,73	24,74	24,73	24,74	24,71	24,71	24,54	28,7441
08-ago-16	24,84	25,10	25,14	25,10	25,14	25,12	24,74	24,56	24,57	24,57	24,57	24,55	24,55	24,37	28,7710
15-ago-16	25,26	25,55	25,59	25,53	25,59	25,56	25,19	24,95	24,96	24,95	24,96	24,93	24,93	24,76	28,7878
22-ago-16	25,67	26,06	26,10	26,04	26,10	26,08	25,70	25,25	25,27	25,25	25,27	25,25	25,25	25,07	28,8247
29-ago-16	26,58	26,98	27,02	26,98	27,02	26,99	26,62	26,15	26,16	26,15	26,16	26,13	26,13	25,96	28,8516
SEPTIEMBRE	25,70	26,09	26,13	26,07	26,13	26,11	25,78	25,28	25,28	25,29	25,28	25,26	25,26	25,09	28,9113
05-sep-16	26,35	26,64	26,68	26,64	26,67	26,64	26,28	26,03	26,04	26,04	26,04	26,01	26,01	25,84	28,8786
12-sep-16	25,14	25,45	25,45	25,48	25,45	25,42	25,22	24,80	24,79	24,84	24,79	24,76	24,76	24,59	28,9055
19-sep-16	25,57	25,95	25,99	25,93	25,99	25,97	25,59	25,16	25,18	25,16	25,18	25,15	25,15	24,98	28,9325
26-sep-16	25,76	26,34	26,43	26,43	26,43	26,41	26,03	25,13	25,14	25,14	25,14	25,12	25,12	24,94	28,9595
OCTUBRE	26,58	27,13	27,17	27,12	27,16	27,14	26,77	25,97	25,98	25,98	25,98	25,96	25,96	25,78	29,0292
03-oct-16	26,26	26,86	26,89	26,85	26,89	26,89	26,49	25,62	25,63	25,62	25,62	25,60	25,60	25,43	28,9886
10-oct-16	26,67	27,21	27,25	27,21	27,25	27,22	26,85	26,08	26,09	26,09	26,09	26,07	26,07	25,89	29,0136
17-oct-16	26,67	27,24	27,28	27,23	27,28	27,25	26,88	26,04	26,05	26,05	26,05	26,03	26,03	25,85	29,0407
24-oct-16	26,70	27,23	27,27	27,22	27,27	27,24	26,87	26,12	26,13	26,13	26,13	26,11	26,11	25,93	29,0678
31-oct-16	26,58	27,11	27,15	27,10	27,14	27,12	26,75	26,00	26,01	26,01	26,00	25,98	25,98	25,81	29,0950
NOVIEMBRE	25,56	26,14	26,18	26,13	26,17	26,15	25,78	24,93	24,95	24,94	24,95	24,92	24,92	24,75	29,1474
07-nov-16	26,29	26,82	26,86	26,82	26,86	26,84	26,46	25,71	25,72	25,72	25,73	25,70	25,70	25,52	29,1221
14-nov-16	25,47	26,01	26,05	26,01	26,05	26,02	25,65	24,89	24,90	24,90	24,90	24,87	24,87	24,70	29,1493
21-nov-16	24,89	25,54	25,57	25,54	25,57	25,54	25,17	24,19	24,19	24,22	24,19	24,16	24,16	23,99	29,1765
28-nov-16	25,59	26,19	26,23	26,16	26,23	26,21	25,83	24,95	24,97	24,93	24,97	24,95	24,95	24,77	29,2038
DICIEMBRE	26,99	27,55	27,60	27,54	27,15	27,57	27,20	26,37	26,39	26,38	26,38	26,36	26,36	26,19	29,2661

**INSTITUTO NICARAGÜENSE DE ENERGÍA
DIRECCIÓN GENERAL DE HIDROCARBUROS**

**PRECIOS PROMEDIOS AL CONSUMIDOR EN LA CIUDAD DE MANAGUA, 2016
DIESEL CON ADITIVO Y SIN ADITIVO**

(Córdobas por Litro)

MESES	PROMEDIO DIESEL	DIESEL CON ADITIVO					DIESEL SIN ADITIVO				T/C. PROM. C\$/US\$
		PROMEDIO	PUMA ENERGY	UNO	UNO PETROLEOS	INDEPENDIENTES	PROMEDIO	DNP/PETRONIC	UNO	UNO PETROLEOS	
ENERO	18,22	18,27	18,18	18,42	18,42	17,80	18,17	18,15	18,17	18,18	27,9879
04-ene-16	18,71	18,76	18,67	18,92	18,92	18,20	18,66	18,65	18,67	18,67	27,9506
11-ene-16	18,92	18,97	18,87	19,12	19,12	18,50	18,86	18,85	18,87	18,86	27,9767
18-ene-16	17,94	17,99	17,89	18,14	18,13	17,60	17,88	17,86	17,88	17,89	28,0028
25-ene-16	17,32	17,37	17,27	17,52	17,52	16,90	17,27	17,25	17,26	17,29	28,0290
FEBRERO	17,81	17,86	17,75	18,01	18,02	17,40	17,76	17,74	17,76	17,76	28,1001
01-feb-16	17,51	17,55	17,47	17,69	17,71	17,04	17,46	17,44	17,46	17,47	28,0551
08-feb-16	18,04	18,09	17,99	18,24	18,24	17,69	17,99	17,97	18,00	17,99	28,0813
15-feb-16	17,81	17,87	17,77	18,02	18,01	17,40	17,76	17,74	17,76	17,76	28,1076
22-feb-16	17,82	17,87	17,77	18,02	18,02	17,40	17,76	17,75	17,77	17,77	28,1338
29-feb-16	17,88	17,93	17,84	18,08	18,08	17,46	17,83	17,81	17,83	17,84	28,1601
MARZO	18,65	18,70	18,61	18,85	18,85	18,24	18,59	18,58	18,60	18,60	28,2095
07-mar-16	18,23	18,29	18,19	18,44	18,43	17,82	18,18	18,16	18,18	18,19	28,1863
14-mar-16	18,70	18,76	18,66	18,90	18,90	18,29	18,64	18,63	18,63	18,66	28,2127
21-mar-16	18,71	18,76	18,66	18,92	18,91	18,29	18,66	18,64	18,67	18,66	28,2390
28-mar-16	18,95	19,00	18,91	19,15	19,15	18,54	18,90	18,87	18,90	18,90	28,2654
ABRIL	18,91	18,96	18,86	19,11	19,09	18,50	18,85	18,84	18,86	18,86	28,3276
04-abr-16	18,37	18,42	18,32	18,56	18,57	17,95	18,31	18,30	18,32	18,32	28,2880
11-abr-16	18,36	18,42	18,32	18,56	18,56	17,95	18,31	18,29	18,32	18,32	28,3144
18-abr-16	19,26	19,31	19,22	19,47	19,41	18,85	19,21	19,19	19,21	19,22	28,3408
25-abr-16	19,64	19,69	19,59	19,85	19,83	19,22	19,58	19,56	19,58	19,59	28,3673
MAYO	20,58	20,63	20,35	20,78	20,76	20,18	20,53	20,52	20,52	20,53	28,4430
02-may-16	20,10	20,15	20,05	20,31	20,30	19,68	20,05	20,03	20,06	20,05	28,3976
09-may-16	20,29	20,35	20,25	20,49	20,49	19,88	20,24	20,22	20,24	20,25	28,4241
16-may-16	20,23	20,27	20,14	20,44	20,41	19,82	20,19	20,17	20,19	20,19	28,4506
23-may-16	20,98	21,04	20,95	21,20	21,15	20,58	20,92	20,93	20,90	20,95	28,4772
31-may-16	21,33	21,37	21,28	21,53	21,53	20,91	21,28	21,26	21,28	21,28	28,5037
JUNIO	21,57	21,62	21,52	21,77	21,73	21,16	21,52	21,50	21,52	21,52	28,5589
06-jun-16	21,43	21,48	21,39	21,63	21,63	21,02	21,38	21,36	21,38	21,39	28,5304
13-jun-16	21,72	21,77	21,67	21,92	21,92	21,30	21,66	21,65	21,67	21,67	28,5570
20-jun-16	21,61	21,66	21,57	21,81	21,76	21,20	21,56	21,54	21,57	21,57	28,5837
27-jun-16	21,51	21,55	21,46	21,71	21,63	21,09	21,46	21,44	21,47	21,46	28,6103
JULIO	21,09	21,14	21,05	21,28	21,27	20,71	21,04	21,02	21,06	21,03	28,6753
04-jul-16	21,52	21,57	21,48	21,73	21,73	21,11	21,47	21,46	21,47	21,48	28,6370
11-jul-16	21,47	21,52	21,43	21,67	21,67	21,06	21,42	21,39	21,43	21,42	28,6638
18-jul-16	20,74	20,78	20,68	20,93	20,92	20,19	20,70	20,65	20,74	20,68	28,6905
25-jul-16	20,64	20,69	20,58	20,82	20,84	20,22	20,59	20,55	20,61	20,56	28,7173
AGOSTO	20,63	20,69	20,29	20,84	20,84	20,10	20,58	20,56	20,58	20,58	28,7940
02-ago-16	20,21	20,25	20,15	20,40	20,41	19,66	20,17	20,12	20,20	20,15	28,7441
08-ago-16	19,87	19,92	19,82	20,07	20,09	19,33	19,81	19,80	19,81	19,82	28,7710
15-ago-16	20,11	20,17	20,07	20,32	20,32	19,58	20,06	20,05	20,06	20,07	28,7878
22-ago-16	21,16	21,23	21,13	21,38	21,37	20,64	21,10	21,10	21,08	21,13	28,8247
29-ago-16	21,81	21,87	21,76	22,00	22,03	21,27	21,75	21,73	21,76	21,76	28,8516
SEPTIEMBRE	21,24	21,29	21,18	21,43	21,43	20,69	21,19	21,16	21,20	21,18	28,9113
05-sep-16	21,59	21,65	21,54	21,79	21,82	21,05	21,53	21,52	21,53	21,54	28,8786
12-sep-16	21,01	21,05	20,95	21,19	21,19	20,46	20,96	20,92	20,99	20,95	28,9055
19-sep-16	21,23	21,27	21,17	21,42	21,41	20,68	21,18	21,15	21,19	21,17	28,9325
26-sep-16	21,13	21,17	21,07	21,32	21,32	20,58	21,08	21,05	21,10	21,07	28,9595
OCTUBRE	22,20	22,25	22,09	22,40	22,39	21,68	22,15	22,13	22,16	22,15	29,0292
03-oct-16	21,54	21,59	21,49	21,73	21,73	21,00	21,48	21,46	21,49	21,48	28,9886
10-oct-16	22,27	22,32	22,22	22,47	22,46	21,73	22,22	22,20	22,23	22,21	29,0136
17-oct-16	22,48	22,54	22,43	22,67	22,67	22,01	22,43	22,40	22,44	22,43	29,0407
24-oct-16	22,26	22,31	22,21	22,45	22,46	21,72	22,21	22,18	22,22	22,43	29,0678
31-oct-16	22,46	22,51	22,41	22,65	22,65	21,92	22,41	22,39	22,41	22,41	29,0950
NOVIEMBRE	21,72	21,77	21,67	21,92	21,91	21,18	21,66	21,64	21,67	21,67	29,1474
07-nov-16	22,23	22,28	22,18	22,42	22,43	21,69	22,18	22,16	22,19	22,18	29,1221
14-nov-16	21,53	21,58	21,48	21,73	21,73	20,99	21,48	21,46	21,48	21,48	29,1493
21-nov-16	21,33	21,39	21,29	21,53	21,52	20,80	21,28	21,23	21,30	21,28	29,1765
28-nov-16	21,78	21,84	21,74	21,98	21,99	21,25	21,72	21,71	21,71	21,74	29,2038
DICIEMBRE	22,64	22,69	22,59	22,83	22,84	22,10	22,58	22,57	22,59	22,59	29,2661
05-dic-16	21,94	22,00	21,91	22,13	22,14	21,42	21,89	21,90	21,88	21,90	29,2310
10-dic-16	22,81	22,86	22,77	23,00	23,02	22,28	22,76	22,74	22,77	22,76	29,2583
17-dic-16	22,69	22,74	22,64	22,89	22,89	22,15	22,64	22,62	22,66	22,64	29,2856
27-dic-16	23,10	23,16	23,05	23,31	23,30	22,56	23,04	23,03	23,05	23,04	29,3130
PROMEDIO	20,43	20,47	20,37	20,62	20,71	19,82	20,38	20,36	20,38	20,37	28,6224

FUENTE: ESTACIONES DE SERVICIO DE LA CIUDAD DE MANAGUA

**INSTITUTO NICARAGÜENSE DE ENERGÍA
DIRECCIÓN GENERAL DE HIDROCARBUROS**

PRECIOS PROMEDIOS AL CONSUMIDOR EN LA CIUDAD DE MANAGUA, 2016

KEROSENE

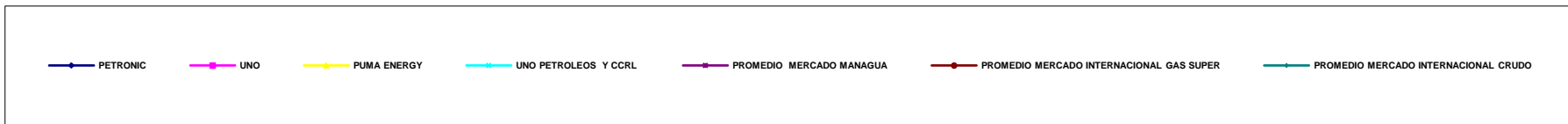
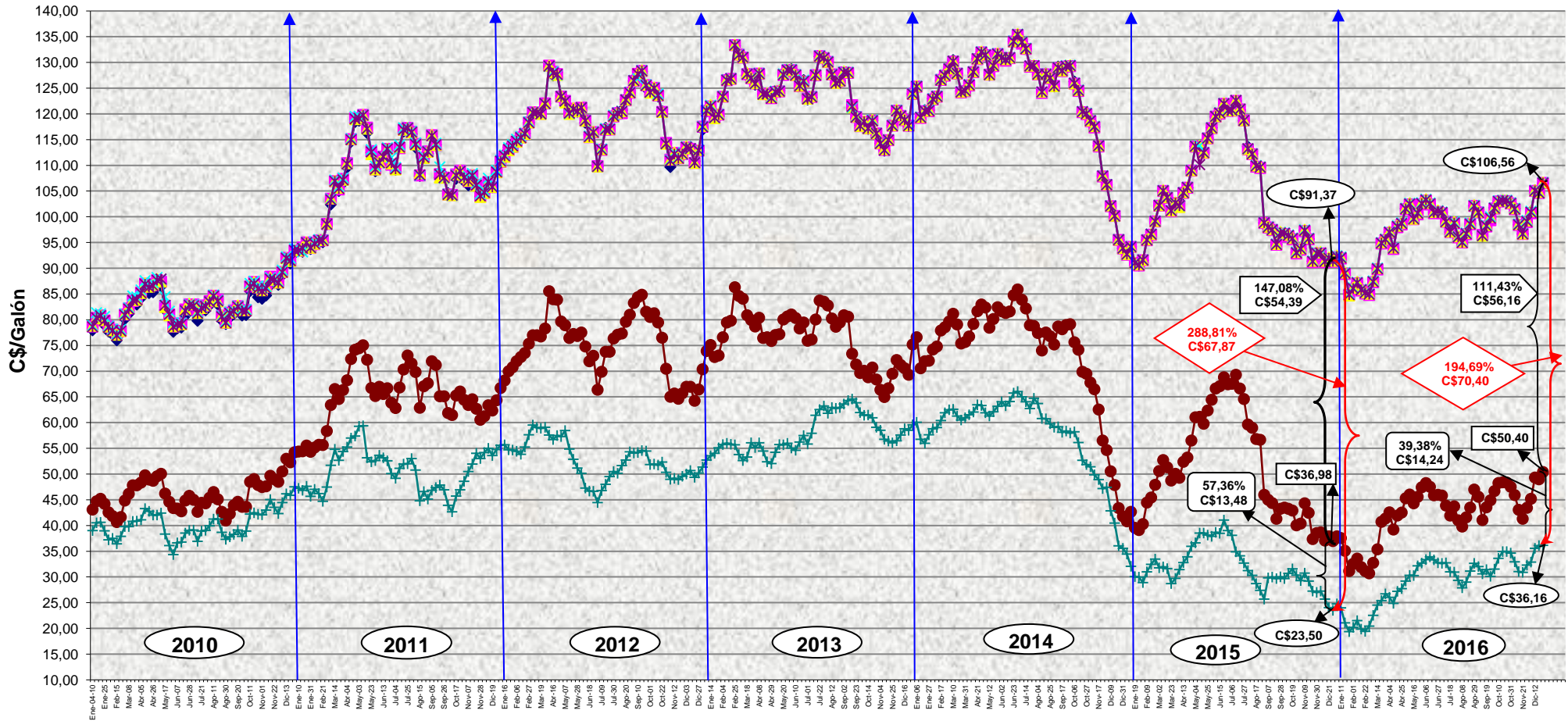
(Córdobas por Litro)

FECHA	PROMEDIO	PUMA ENERGY	UNO	UNO PETROLEOS	T/C. PROM. C\$/US\$
ENERO	19,19	17,31	18,42	20,34	27,9879
04-ene-16	20,21	17,88	19,25	21,63	27,9506
11-ene-16	19,30	17,91	19,00	19,97	27,9767
18-ene-16	18,83	17,01	18,02	19,97	28,0028
25-ene-16	18,43	16,42	17,40	19,78	28,0290
FEBRERO	18,83	17,20	17,90	20,07	28,1001
01-feb-16	18,59	16,66	17,60	19,89	28,0551
08-feb-16	18,92	17,47	18,12	20,45	28,0813
15-feb-16	18,92	17,39	17,90	20,10	28,1076
22-feb-16	18,87	17,36	17,90	20,01	28,1338
29-feb-16	18,85	17,14	17,97	20,01	28,1601
MARZO	19,45	18,09	18,88	20,28	28,2095
07-mar-16	19,19	17,54	18,62	20,11	28,1863
14-mar-16	19,47	18,13	18,88	20,30	28,2127
21-mar-16	19,51	18,23	18,88	20,36	28,2390
28-mar-16	19,63	18,45	19,13	20,36	28,2654
ABRIL	19,65	18,24	19,18	20,44	28,3276
04-abr-16	19,38	18,03	18,57	20,36	28,2880
11-abr-16	19,27	17,68	18,57	20,27	28,3144
18-abr-16	19,85	18,52	19,47	20,54	28,3408
25-abr-16	20,13	18,72	20,11	20,61	28,3673
MAYO	20,81	19,63	21,05	21,05	28,4430
02-may-16	20,26	19,08	20,02	20,74	28,3976
09-may-16	20,61	19,34	20,77	20,92	28,4241
16-may-16	20,56	19,29	20,71	20,88	28,4506
23-may-16	21,07	20,05	21,47	21,15	28,4772
31-may-16	21,44	20,41	21,80	21,54	28,5037
JUNIO	21,41	20,56	21,71	21,50	28,5589
06-jun-16	21,22	20,44	21,11	21,56	28,5304
13-jun-16	21,65	20,68	22,17	21,63	28,5570
20-jun-16	21,20	20,61	21,59	21,59	28,5837
27-jun-16	21,53	20,51	21,96	21,96	28,6103
JULIO	21,34	20,18	21,51	21,61	28,6753
04-jul-16	21,55	20,56	21,96	21,61	28,6370
11-jul-16	21,59	20,52	21,90	21,75	28,6638
18-jul-16	21,16	19,95	21,15	21,58	28,6905
25-jul-16	21,05	19,69	21,05	21,50	28,7173
AGOSTO	21,11	19,69	20,88	21,72	28,7940
02-ago-16	20,49	19,18	19,87	21,34	28,7441
08-ago-16	20,50	18,81	20,27	21,21	28,7710
15-ago-16	20,89	19,28	20,04	21,71	28,7878
22-ago-16	21,62	20,33	21,60	22,07	28,8247
29-ago-16	22,02	20,87	22,23	22,26	28,8516
SEPTIEMBRE	21,63	20,24	21,74	22,02	28,9113
05-sep-16	21,91	20,59	22,50	22,15	28,8786
12-sep-16	21,48	20,06	21,43	21,98	28,9055
19-sep-16	21,62	20,17	21,75	22,02	28,9325
26-sep-16	21,54	20,12	21,66	21,94	28,9595
OCTUBRE	22,29	21,11	22,75	22,42	29,0292
03-oct-16	21,78	20,43	22,07	22,04	28,9886
10-oct-16	22,27	21,14	22,80	22,30	29,0136
17-oct-16	22,47	21,39	23,01	22,47	29,0407
24-oct-16	22,50	21,24	22,74	22,89	29,0678
31-oct-16	22,49	21,33	23,50	22,54	29,0950
NOVIEMBRE	21,97	20,68	22,23	22,22	29,1474
07-nov-16	22,42	21,03	22,71	22,69	29,1221
14-nov-16	21,77	20,46	22,01	22,04	29,1493
21-nov-16	21,66	20,32	21,82	22,01	29,1765
28-nov-16	22,02	20,90	22,37	22,16	29,2038
DICIEMBRE	22,48	21,64	23,22	22,44	29,2661
05-dic-16	22,12	20,99	22,57	22,19	29,2310
12-dic-16	22,54	21,51	24,05	22,38	29,2583
19-dic-16	22,43	21,93	22,61	22,58	29,2856
26-dic-16	22,88	22,11	24,33	22,66	29,3130
PROMEDIO	20,81	19,54	20,67	21,33	28,6224

FUENTE: ESTACIONES DE SERVICIO DE LA CIUDAD DE MANAGUA

Instituto Nicaragüense de Energía Dirección General de Hidrocarburos

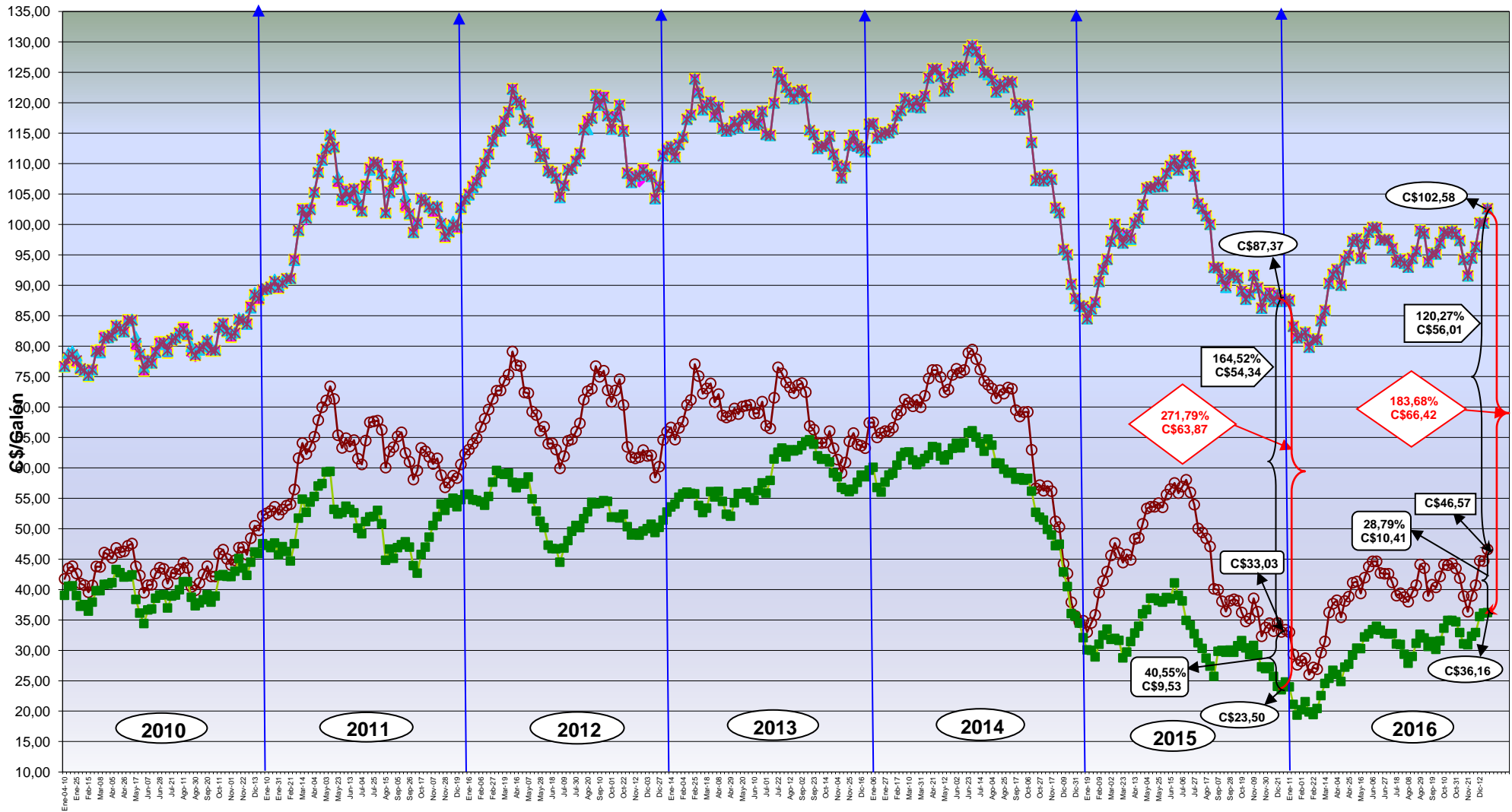
Evolución de los Precios de la Gasolina Súper, Nacional vs. Internacional, 2010-2016



LAS DIFERENCIAS ENTRE LOS PRECIOS NACIONALES E INTERNACIONALES CORRESPONDEN A FLETE Y SEGUROS, COSTOS DE INTERNACION, ALMACENAMIENTO, COMERCIALIZACION E IMPUESTOS,

Instituto Nicaragüense de Energía Dirección General de Hidrocarburos

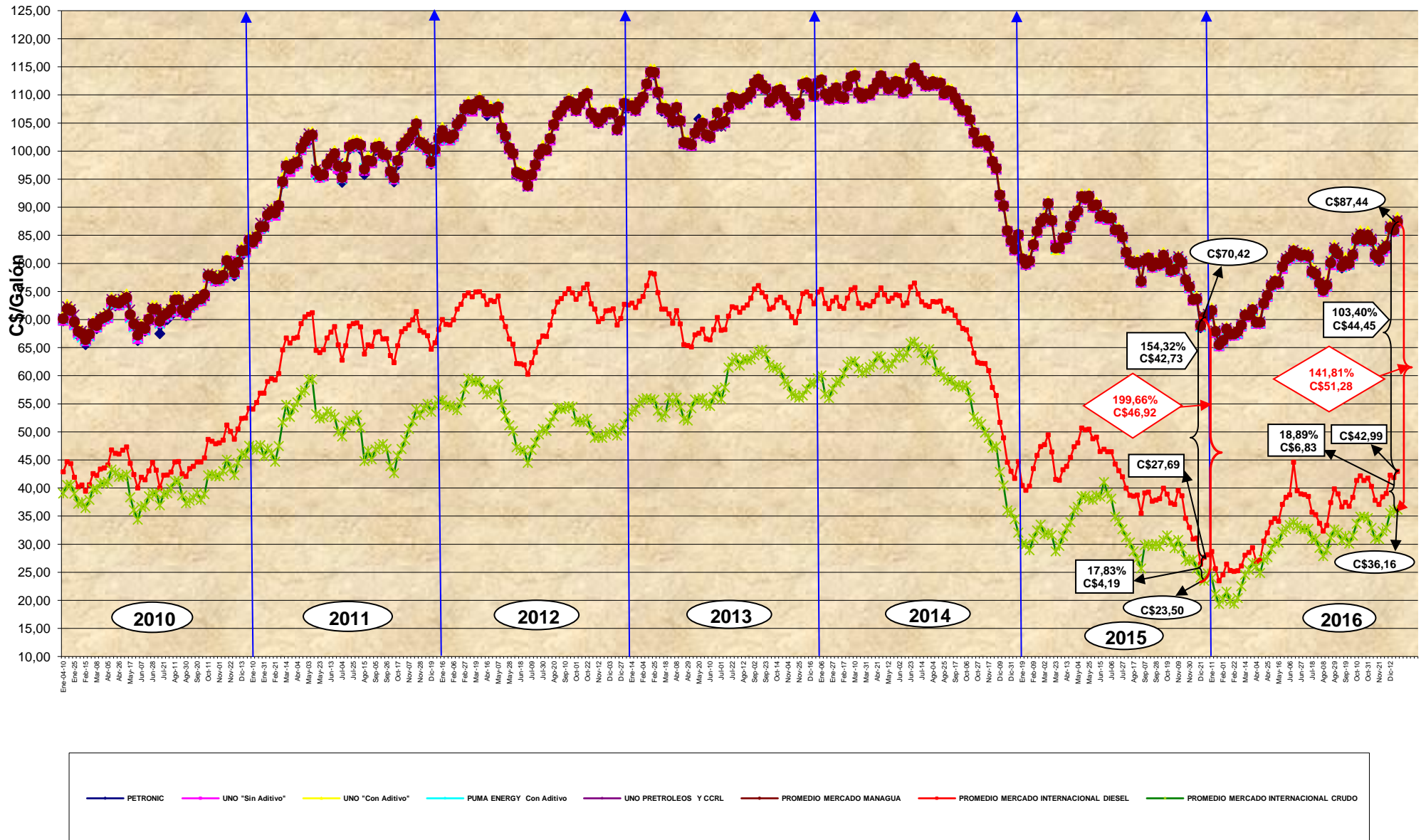
Evolución de los Precios de la Gasolina Regular, Nacional vs. Internacional, 2010-2016



LAS DIFERENCIAS ENTRE LOS PRECIOS NACIONALES E INTERNACIONALES CORRESPONDEN A FLETE Y SEGUROS,, COSTOS DE INTERNACION , ALMACENAMIENTO, COMERCIALIZACION E IMPUESTOS,

Instituto Nicaragüense de Energía Dirección General de Hidrocarburos

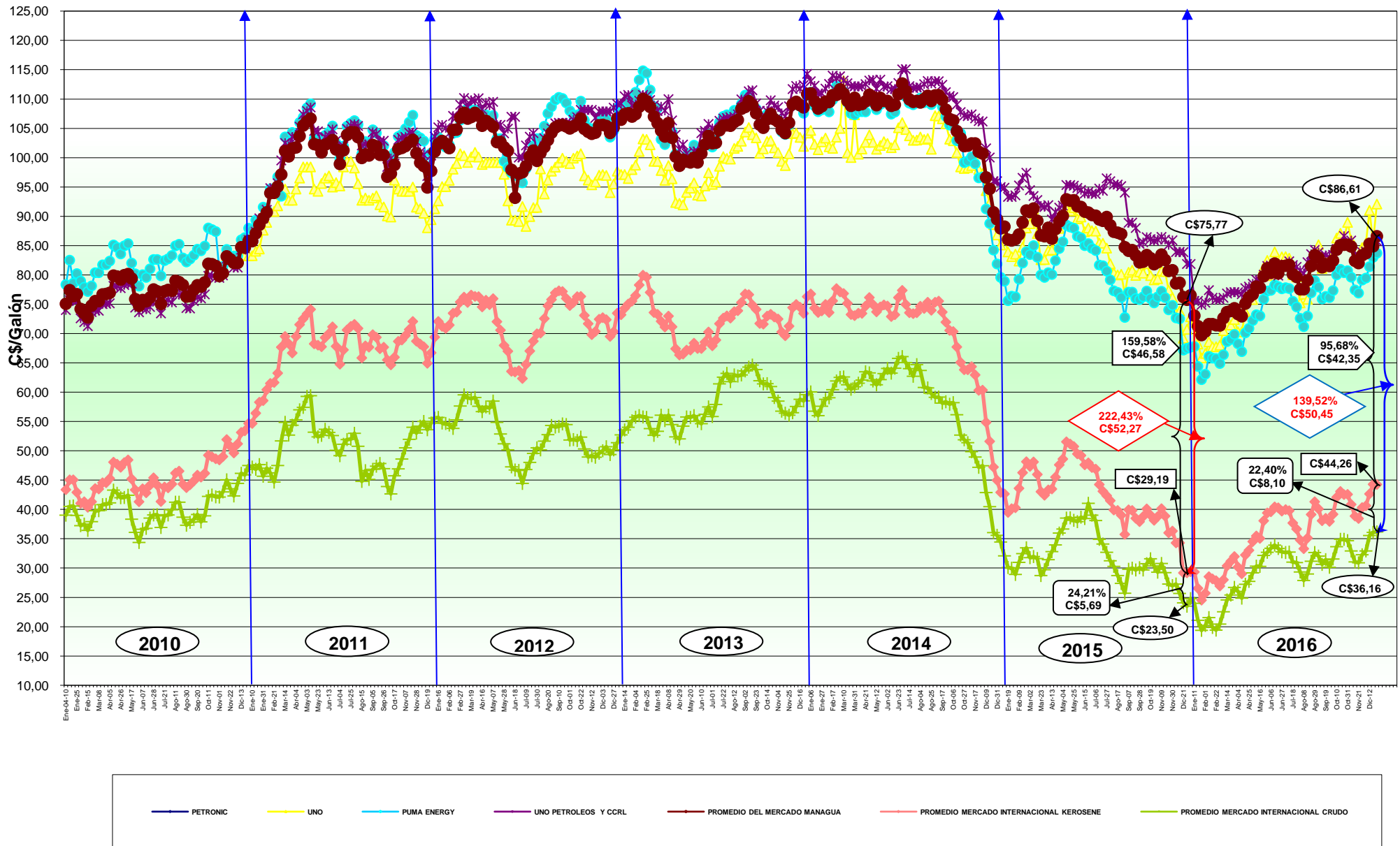
Evolución de los Precios del Diesel Nacional vs. Internacional, 2010-2016



LAS DIFERENCIAS ENTRE LOS PRECIOS NACIONALES E INTERNACIONALES CORRESPONDEN A FLETE Y SEGUROS, COSTOS DE INTERNACION, ALMACENAMIENTO, COMERCIALIZACION E IMPUESTOS

Instituto Nicaragüense de Energía Dirección General de Hidrocarburos

Evolución de los Precios del Kerosene Nacional vs. Internacional, 2010-2016



LAS DIFERENCIAS ENTRE LOS PRECIOS NACIONALES E INTERNACIONALES CORRESPONDEN A FLETE Y SEGUROS, COSTOS DE INTERNACION , ALMACENAMIENTO, COMERCIALIZACION E IMPUESTOS